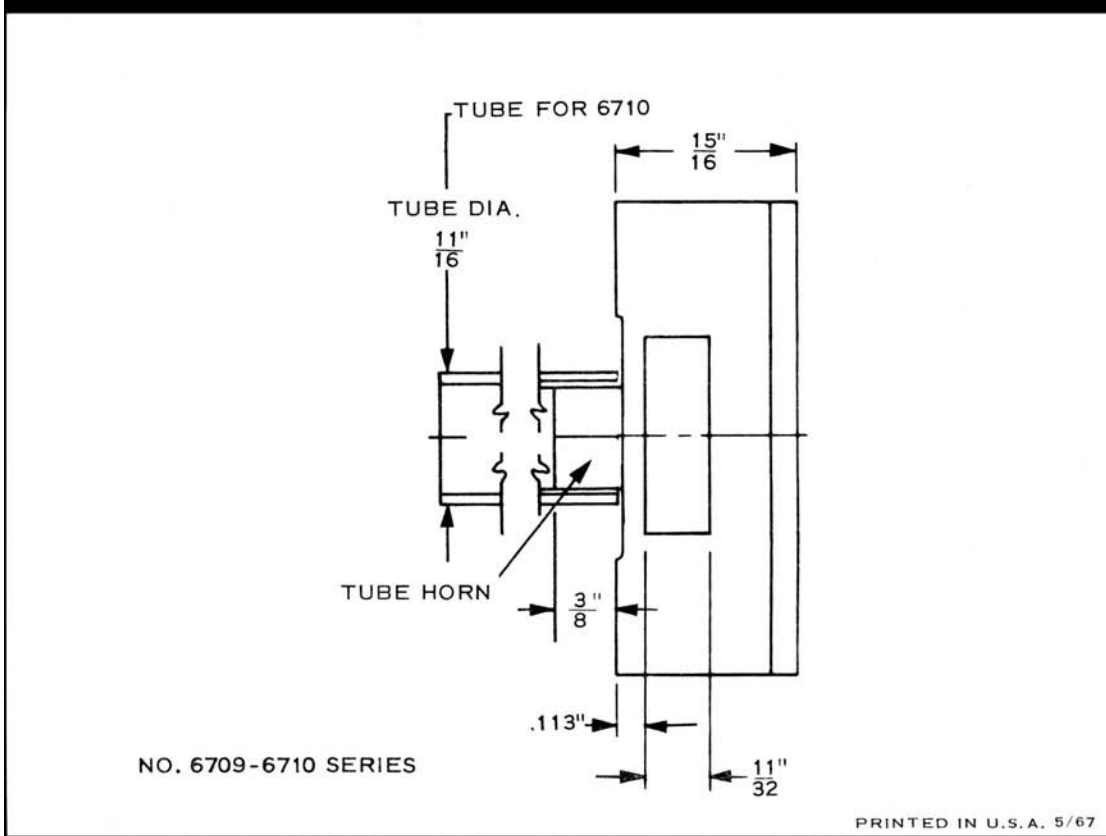
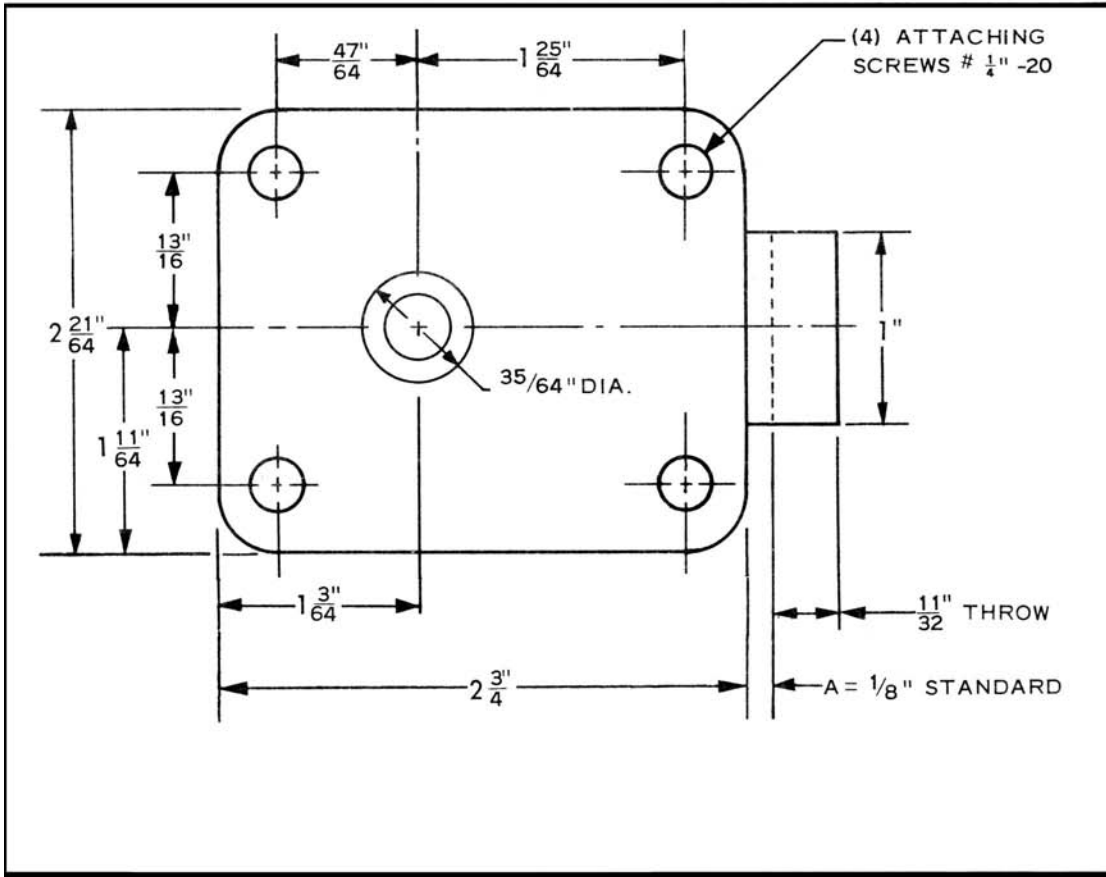


FOR PRICE REFER TO PAGE CLI-92.0





OPERATING INSTRUCTIONS FOR COMBINATION LOCK

6709-6710



6716-6717

HAND CHANGING

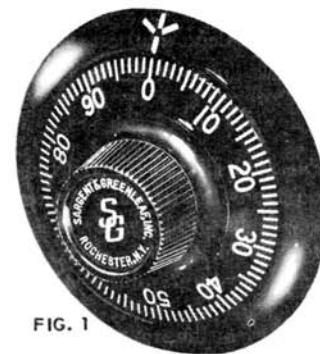
These instructions are for RIGHT HAND locks. For left hand locks reverse the directions of dial turns. Before operating the lock or changing the combination, READ INSTRUCTIONS THOROUGHLY.

At the top of the dial ring an index  is provided for dialing and opening.

This is a precision lock, therefore, extreme care must be used to align the combination numbers with the index.

Turn the dial slowly and steadily. If, after turning the correct number of revolutions, any number is turned beyond the index  the entire series of combination numbers must be re-dialed. DO NOT TURN BACK TO REGAIN A PROPER ALIGNMENT WITH THE NUMBERS. Each time a selected number is aligned with the index  a revolution is counted.








OPENING INDEX








TO UNLOCK

All locks in this series are set on 50-25-50 after final inspection at our factory.



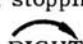
TO UNLOCK A LOCK SET ON A 3 NUMBER COMBINATION:
For example: 50-25-50

1. Turn dial to the  LEFT, stopping when "50" is aligned with the index  the FOURTH time.
2. Turn dial to the  RIGHT, stopping when "25" is aligned with the index  the THIRD time.
3. Turn dial to the  LEFT, stopping when "50" is aligned with the index  the SECOND time.
4. Turn dial slowly to the  RIGHT until it stops.

TO UNLOCK A LOCK SET ON A 2 NUMBER COMBINATION:
For example: Wheel 1 and 2 set on 68, wheel 3 set on 29

1. Turn dial to the  RIGHT, stopping when "68" is aligned with the index  the FOURTH time.
2. Turn dial to the  LEFT, stopping when "29" is aligned with the index  the SECOND time.
3. Turn dial slowly to the  RIGHT until it stops.

TO UNLOCK A LOCK SET ON A 1 NUMBER COMBINATION:
For example: All 3 wheels set on number 56

1. Turn dial to the  LEFT, stopping when "56" is aligned with the index  the FOURTH time.
2. Turn dial slowly to the  RIGHT until it stops.

TO LOCK

1. Turn dial to the  LEFT at least four full revolutions.